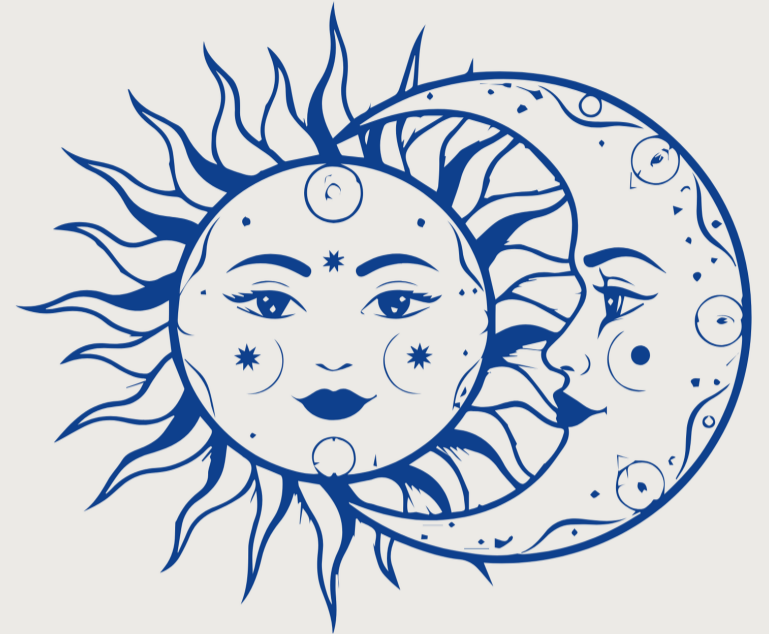


DO YOU HAVE BIPOLAR DISORDER?

Help us understand time-of-day differences
in bipolar disorder

What will participation involve?

- online interviews, surveys and games
- reporting on your sleep and activity during the day
- an MRI brain scan at Swinburne's Hawthorn campus



Am I eligible?

- 18-45 years old
- Diagnosed with bipolar disorder, and currently receiving treatment
- Willing to travel to Swinburne for the MRI

What else do I need to know?

- This study has been reviewed and approved by the Human Research Ethics Committee at Swinburne University of Technology
- You will be compensated for the time taken to complete the study measures (\$40/ hour)



Scan the QR code to read more about the study
and complete an initial eligibility survey

Contact: rhythms_rewards@swin.edu.au

